



# Estrogen Receptor- $\alpha$ (Phospho Thr311) Rabbit pAb

<b>Catalog No</b>	YP-Ab-17180
<b>Isotype</b>	IgG
<b>Reactivity</b>	Human, Mouse, Rat
<b>Applications</b>	IHC, WB
<b>Gene Name</b>	ESR1 ESR NR3A1
<b>Protein Name</b>	Estrogen receptor (ER) (ER-alpha) (Estradiol receptor) (Nuclear receptor subfamily 3 group A member 1)
<b>Immunogen</b>	Synthesized peptide derived from human Estrogen Receptor- $\alpha$ (Phospho Thr311)
<b>Specificity</b>	This antibody detects endogenous levels of Estrogen Receptor- $\alpha$ (Phospho Thr311) Rabbit pAb at Human, Mouse, Rat
<b>Formulation</b>	Liquid in PBS containing 50% glycerol, and 0.02% sodium azide.
<b>Source</b>	Rabbit, polyclonal
<b>Purification</b>	The antibody was affinity-purified from rabbit serum by affinity-chromatography using specific immunogen.
<b>Dilution</b>	WB 1:500-2000 IHC 1:50-200
<b>Concentration</b>	1 mg/ml
<b>Purity</b>	$\geq 90\%$
<b>Storage Stability</b>	-20°C/1 year
<b>Synonyms</b>	Estrogen receptor (ER) (ER-alpha) (Estradiol receptor) (Nuclear receptor subfamily 3 group A member 1)
<b>Observed Band</b>	66kD
<b>Cell Pathway</b>	[Isoform 1]: Nucleus . Cytoplasm . Cell membrane ; Peripheral membrane protein ; Cytoplasmic side . A minor fraction is associated with the inner membrane.; [Isoform 3]: Nucleus. Cytoplasm. Cell membrane; Peripheral membrane protein; Cytoplasmic side. Cell membrane; Single-pass type I membrane protein. Associated with the inner membrane via palmitoylation (Probable). At least a subset exists as a transmembrane protein with a N-terminal extracellular domain. ; Nucleus. Golgi apparatus. Cell membrane. Colocalizes with ZDHHC7 and ZDHHC21 in the Golgi apparatus where most probably palmitoylation occurs. Associated with the plasma membrane when palmitoylated.
<b>Tissue Specificity</b>	Widely expressed (PubMed:10970861). Not expressed in the pituitary gland (PubMed:10970861). ; [Isoform 3]: Widely expressed, however not expressed in the pituitary gland.
<b>Function</b>	domain: Composed of three domains: a modulating N-terminal domain, a DNA-binding domain and a C-terminal steroid-binding domain., function: Nuclear hormone receptor. The steroid hormones and their receptors are involved in the regulation of eukaryotic gene expression and affect cellular proliferation and differentiation in target tissues., online information: Estrogen receptor entry, polymorphism: Genetic variations in ESR1 are correlated with bone mineral



density (BMD). Low BMD is a risk factor for osteoporotic fracture. Osteoporosis is characterized by reduced bone mineral density, disruption of bone microarchitecture, and the alteration of the amount and variety of non-collagenous proteins in bone. Osteoporotic bones are more at risk of fracture.,PTM:Glycosylated; contains N-acetylglucosamine, probably O-linked.,PTM:Phosphorylated by cyclin A/CDK2. Phosphorylation probably enhances transcri

## Background

estrogen receptor 1(ESR1) Homo sapiens This gene encodes an estrogen receptor, a ligand-activated transcription factor composed of several domains important for hormone binding, DNA binding, and activation of transcription. The protein localizes to the nucleus where it may form a homodimer or a heterodimer with estrogen receptor 2. Estrogen and its receptors are essential for sexual development and reproductive function, but also play a role in other tissues such as bone. Estrogen receptors are also involved in pathological processes including breast cancer, endometrial cancer, and osteoporosis. Alternative promoter usage and alternative splicing result in dozens of transcript variants, but the full-length nature of many of these variants has not been determined. [provided by RefSeq, Mar 2014],

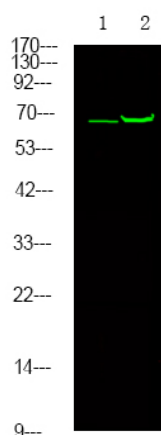
## matters needing attention

Avoid repeated freezing and thawing!

## Usage suggestions

This product can be used in immunological reaction related experiments. For more information, please consult technical personnel.

## Products Images



Western Blot analysis of 1 HeLa cell, 2 Serum-free treated ,using primary antibody at 1:1000 dilution. Secondary antibody(catalog#:RS23920) was diluted at 1:10000